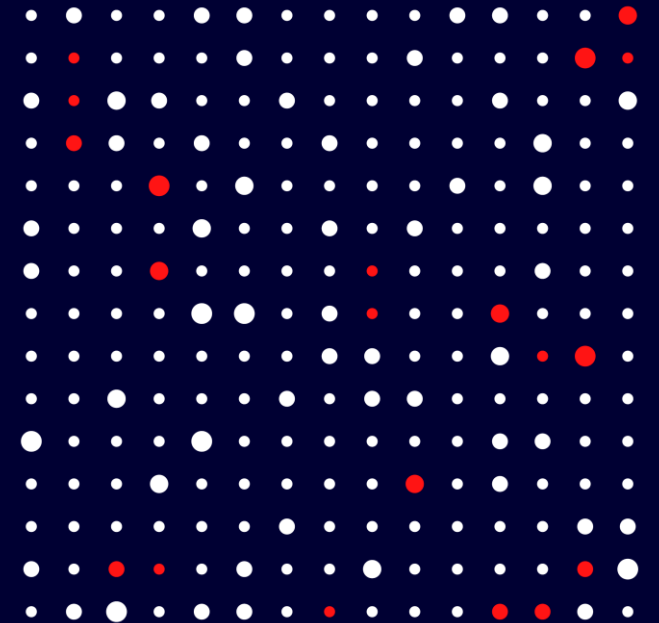


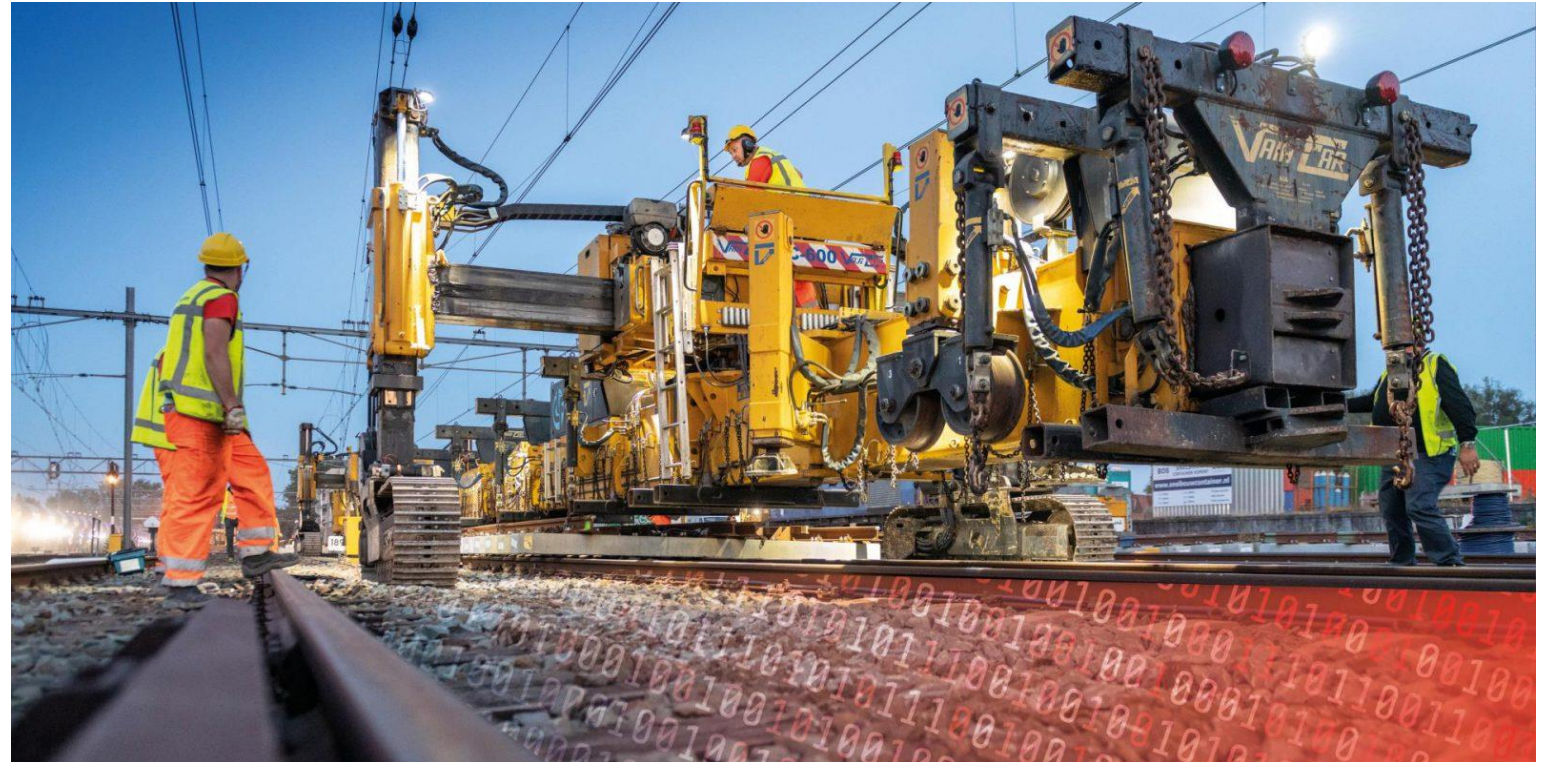
KNOWLEDGE – Your most valuable railway asset

How Condition-Based Maintenance helps you
to become more effective with an ageing workforce



Who we are

Strukton Power:
System Integrator of Energy and Railway solutions



Our challenge

Increase availability of the railway infrastructure in an ageing society with new technology, means:
More work in less time with less people.

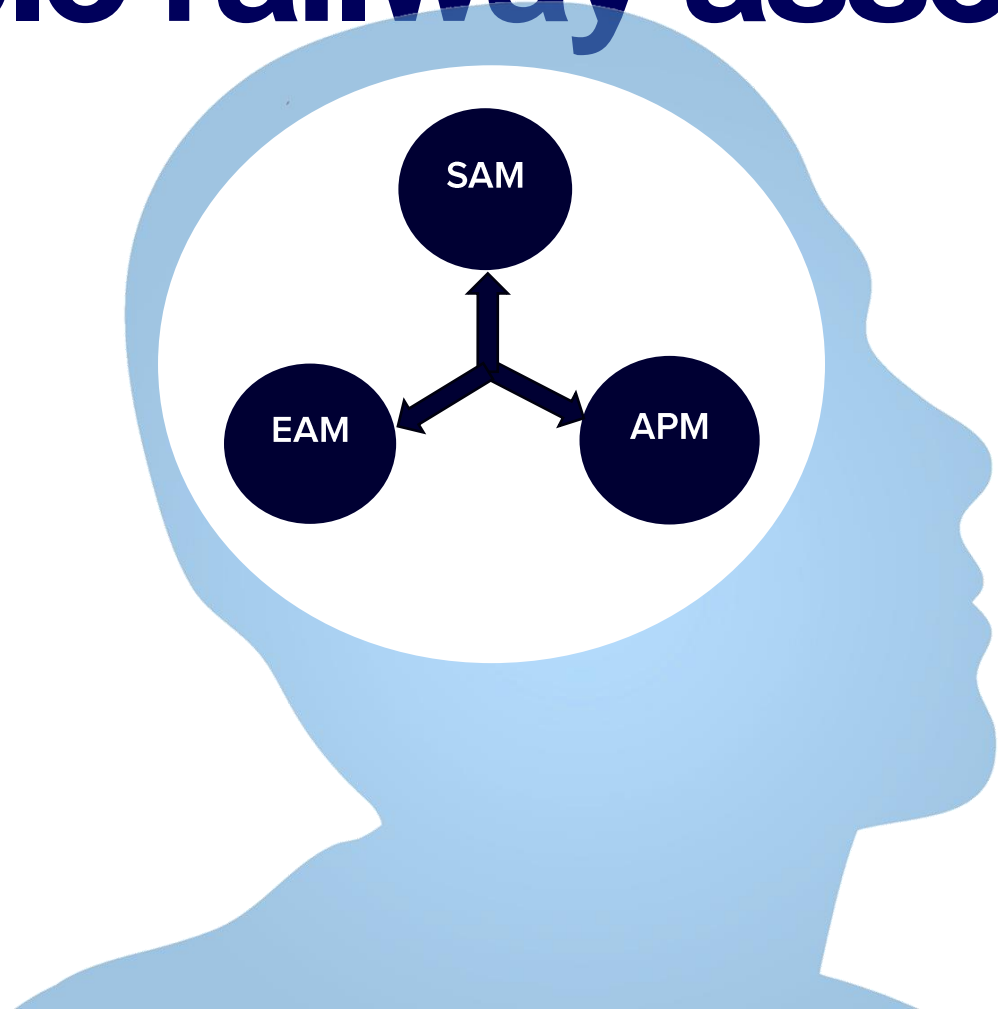
We need to be innovative to meet this challenge!

“Back to school”



KNOWLEDGE – your most valuable railway asset

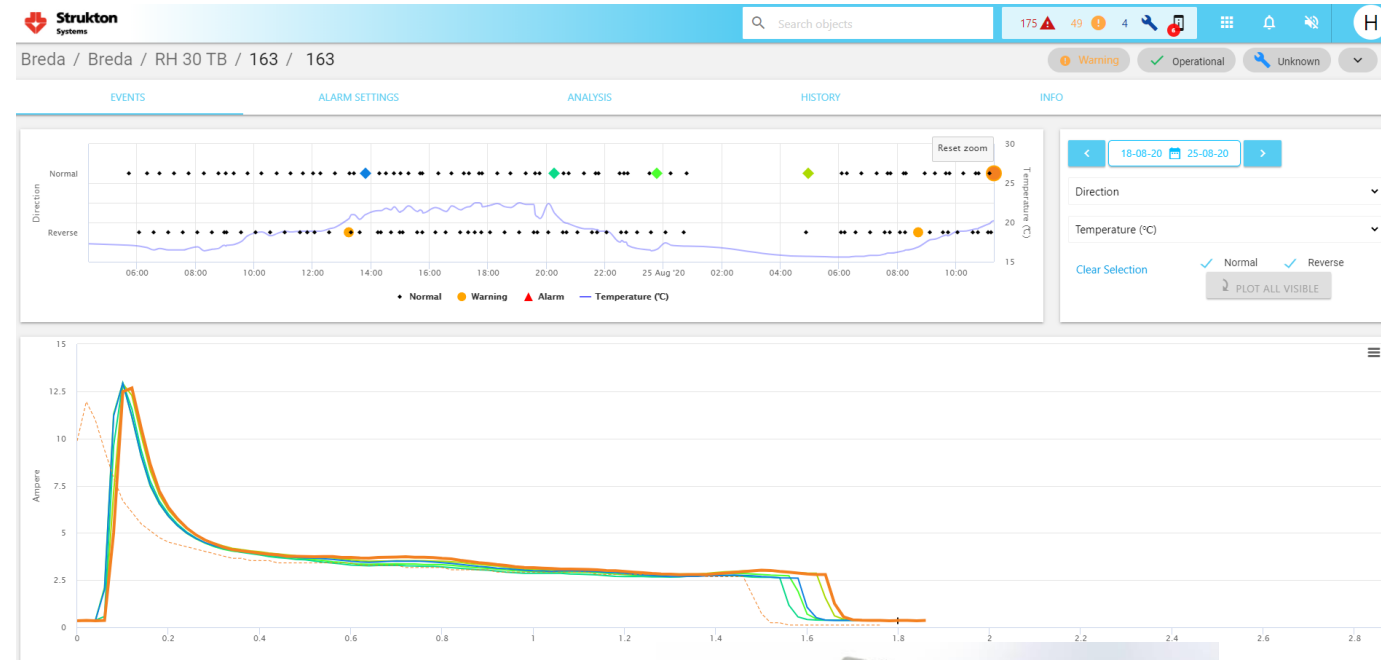
Strukton Rail Assist:
a knowledge platform to
share best practices



Selecting your Asset Performance Monitoring platform

Introducing **POSS**:

- Non-intrusive
- Supplier-independent
- Open interfaces
- Secured data, stored where you want



Best Practise 1: Determine the Business Case

A balancing act: are your business objectives shared by all parties involved?

What are your KPI's for CBM?

- Higher availability of infrastructure,
- Lower operational costs,
- Less workload on critical human resources,
- Sustained knowledge,
- ... CO2 reduction,

and what are the objectives of your subcontractor?



Best Practise 2: Run a Pilot

Give yourselves time to experiment with new way of working and **start learning**

Success factors for a good pilot:

- Limited in time
- Limited in location
- Create a play-ground for training and experiments
- Train all involved parties
- Tangible results and **HAVE FUN!**



Best Practise 3:

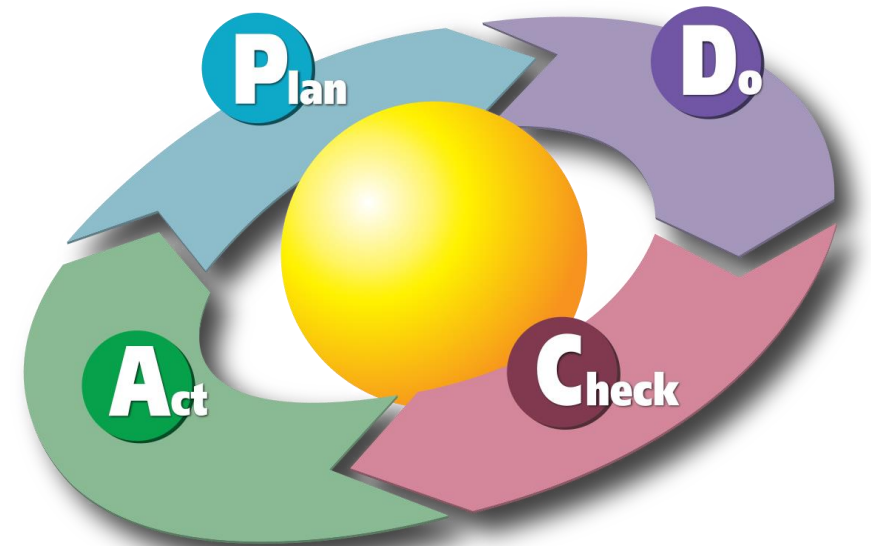
“Measuring is Knowing...”

Integrate monitoring in your daily work orders to validate results and **keep on learning**

Add two simple instructions to your workorders:

- Start work: Check the actual asset condition
- End work: Check again!

Use the outcome as feedback.



For this reason, you'll need Mobile APPs to provide and capture asset data.

Best Practise 4: Fault Catalogues and Smart Software Algorithms

Monitoring may create an overload of data; data analysis becomes the new bottleneck

Optimise your data analysis:

- Fault catalogues are **best practices**
- Software algorithms to automate the fault catalogues.



Best practise 5: Integral Teams

Sharing data means = Support each other

Observations when using CBM:

- Small integral teams are more effective than larger discipline-based teams
- Sharing data support direct communication
- Expect the unexpected
- CBM is about having FUN!



More info?

Contact:

- Gerrit.Nieuwenhuis@Strukton.com or
- Luc.vanRooijen@Strukton.com

We provide:

- POSS - Asset Performance Monitoring
- Strukton Rail Assist – Knowledge Sharing Platform
- Data Analysis Services & Support
- Rail Maintenance Training, Certification & Consulting

